

## 1. Analytical conditions

Solvents: A: Water

B: Acetonitrile

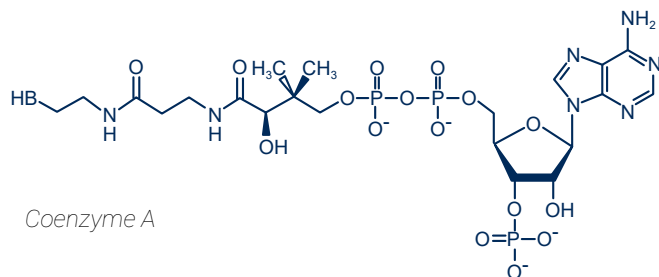
HPLC Column: XBridge 4.6x75mm BEH 2.5µm

Flow rate: 1 mL/min

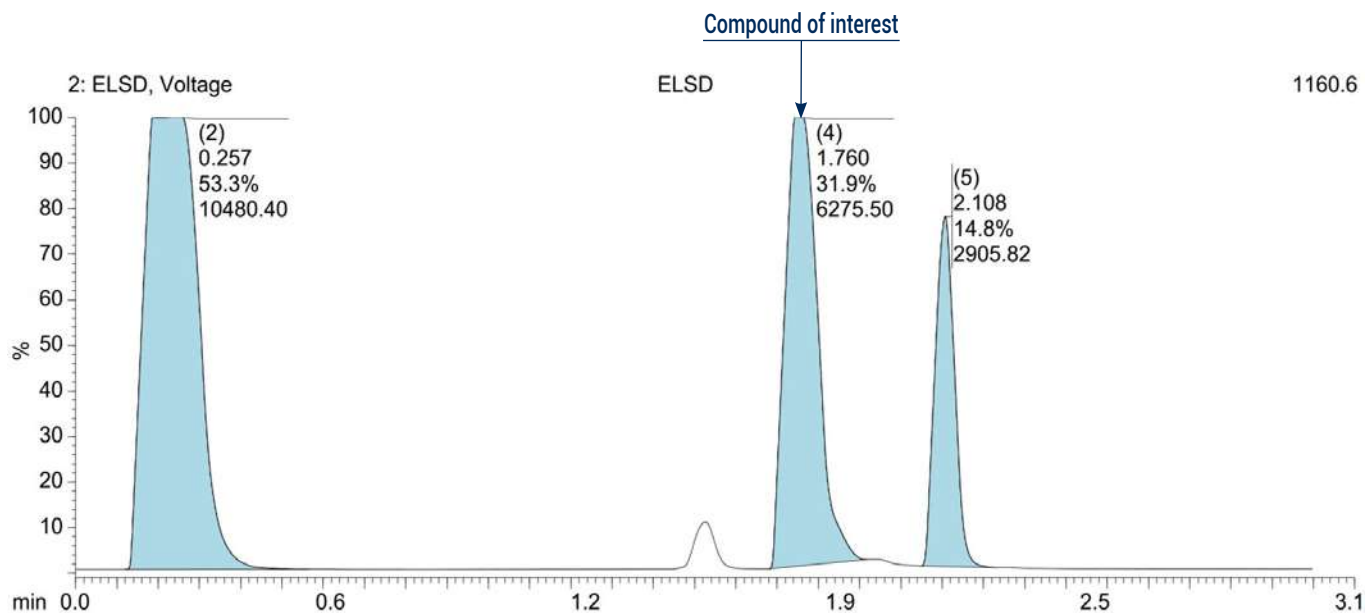
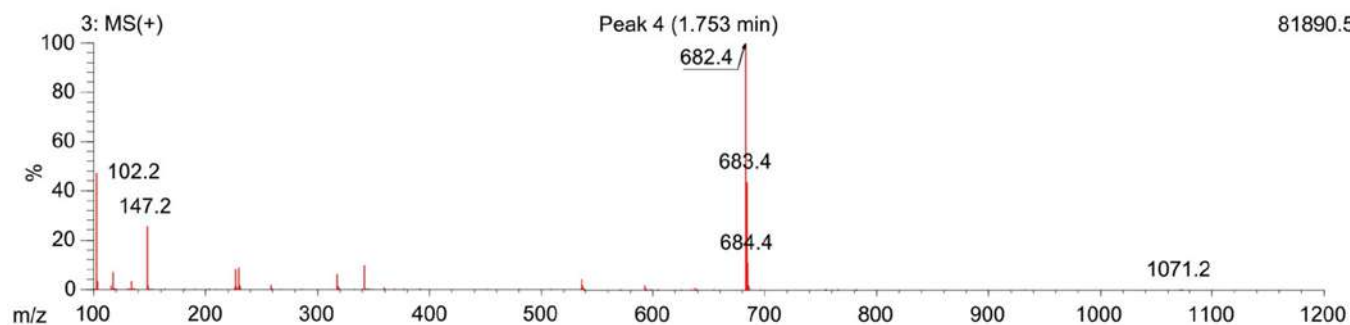
Injection mode: Liquid injection

Injection volume: 1 µL

Detection: ELSD, UV 260nm



Coenzyme A



## 2. Flash conditions

**Device:** puriFlash® 4250 - iELSD (or now puriFlash® 5.250 pack iELSD)

**Solvents:** A: Water

B: Acetonitrile

**Column:** PF-15C18HQ-F0025 (x2)

**Flow rate:** 15mL/min

**Injection mode:** Liquid injection

**Injection volume:** 1mL (150mg of crude sample)

**Detection:** UV 260nm (Black),

UV Scan 200-260nm (Orange),

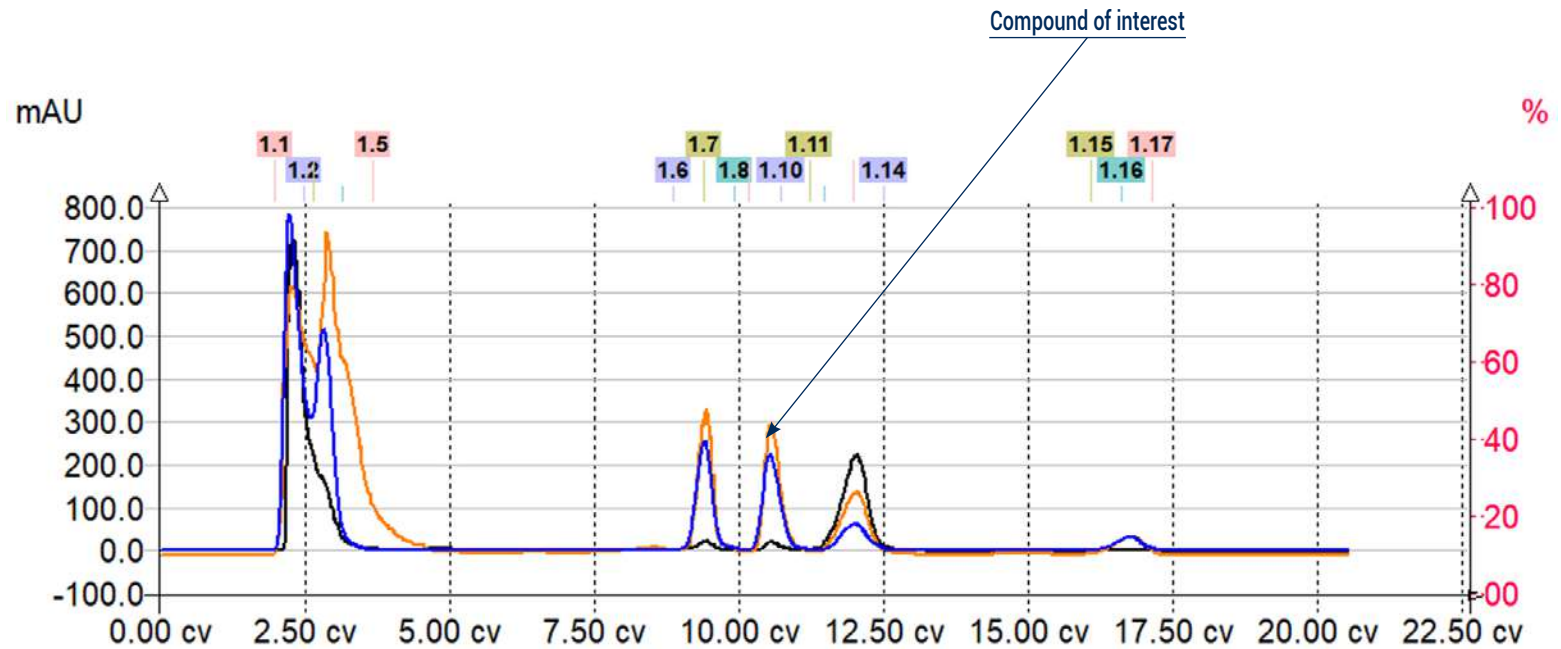
ELSD (50°C, automatic gain) (Blue)

**Pressure:** 8bar

**Mode:** Automatic Gradient Optimization

**Elution conditions:**

CV	A (%)	B (%)
0	90	10
3.5	90	10
8.2	32	68
11.7	32	68
14.5	0	100
22	0	100



More peaks than with UHPLC! Perfect separation although 15µm particle size compared to 2.5µm.



### To achieve this purification:

#### You will need

- puriFlash® 5.250  
[Discover it](#) [Add to card](#)
- puriFlash® Integrated ELSD  
[Discover it](#) [Add to card](#)
- puriFlash® column PF-15C18HQ-F0025  
[Discover it](#) [Add to card](#)

#### We highly recommend

- Trolley  
 AYHF20 [Add to card](#)
- Manometer ELSD  
 FJ6720 [Add to card](#)
- Compressor for integrated ELSD  
 without quiet cover  
 1H3490 [Add to card](#)