



1. TLC method development

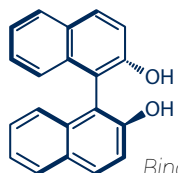


Mobile phase:
Hexane / MTBE

Compound of interest:
Compound 2

Compound	Rf	CV
1	0.5	2
$\Delta CV_{2-1} = 1.33$		
2	0.3	3.33
$\Delta CV_{3-2} = 6.67$		
3	0.1	10

According to ΔCV calculation,
compounds 1 and 2 are difficult to separate.



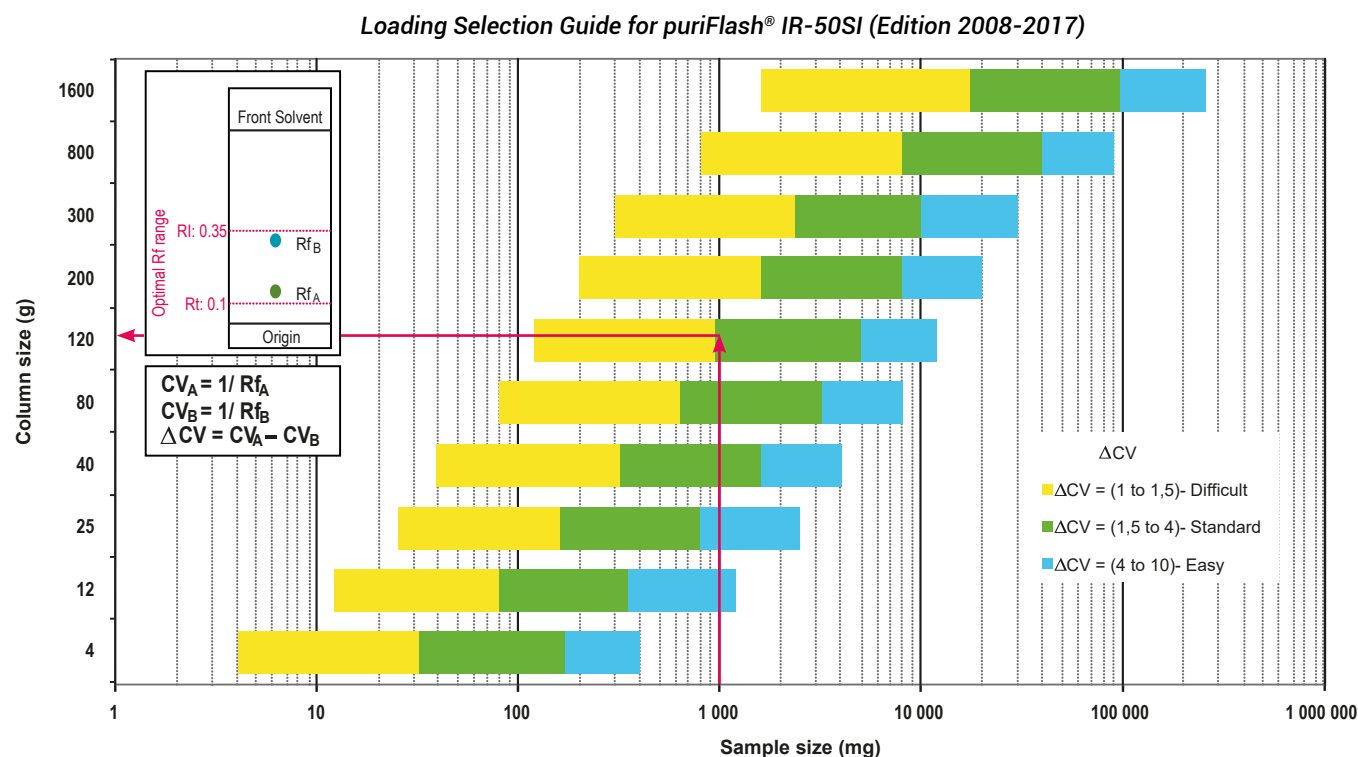
Binol (compound 2)

2. Choice of the column according to the ΔCV & crude sample mass

Crude sample: 1g

Column: PF-30SIHP-F0120

Loading capacity: 0.83%



Customer has chosen to use a PF-30SIHP-F0120 column to obtain a better separation (efficiency & purity) than with a IR-50SI-F0120 column.

3. Flash conditions

Device: puriFlash® 450-iELSD (or now puriFlash® 5.050 pack iELSD)

Solvents: A: Hexane
B: MTBE

Column: PF-30SIHP-F0120

Flow rate: 46mL/min

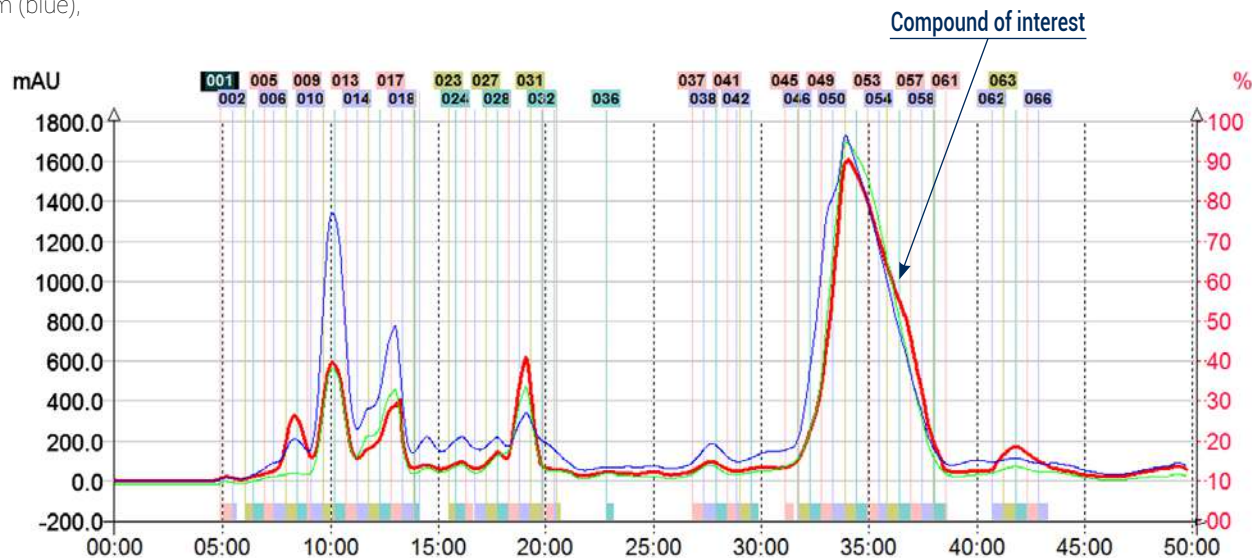
Injection mode: Solid deposit with celite (Dry-load F0012)

Crude sample: 1g

Detection: UV 280nm (green) & UV 300nm (blue),
UV Scan 250-600nm (red)

Elution conditions:

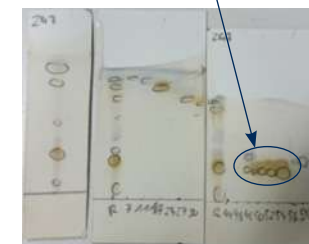
CV	A (%)	B (%)
0	88	12
1	88	12
11	25	75
13.5	25	75
14.5	10	90
16	10	90



4. TLC confirmation

Spotted collection tubes show that the compound of interest was pure in tubes 50 to 56.

Compound of interest



The Interchim® separation revealed a lot of informations that the customer was not aware of. The customer was quite impressed.



To achieve this purification:

You will need

- puriFlash® 5.050
[Discover it](#) [Add to card](#)
- Integrated ELSD
[Discover it](#) [Add to card](#)
- puriFlash® column PF-30SIHP-F0120
[Discover it](#) [Add to card](#)
- puriFlash® Dry-load PF-DLE-F0012
[Discover it](#) [Add to card](#)

We highly recommend

- 16x150mm Rack
AYHE40 [Add to card](#)
- Tubes 16x150mm
BX5400 [Add to card](#)
- Manometer ELSD
FJ6720 [Add to card](#)

Download our App

"TLC to Flash & Prep Chromatography"
to make your TLC developments easier
and faster.

