

## 1. Analytical conditions

**Solvents:** A: Hexane 80%

B: iPrOH 20%

**HPLC Column:** Phenomenex Lux 5µm cellulose 1

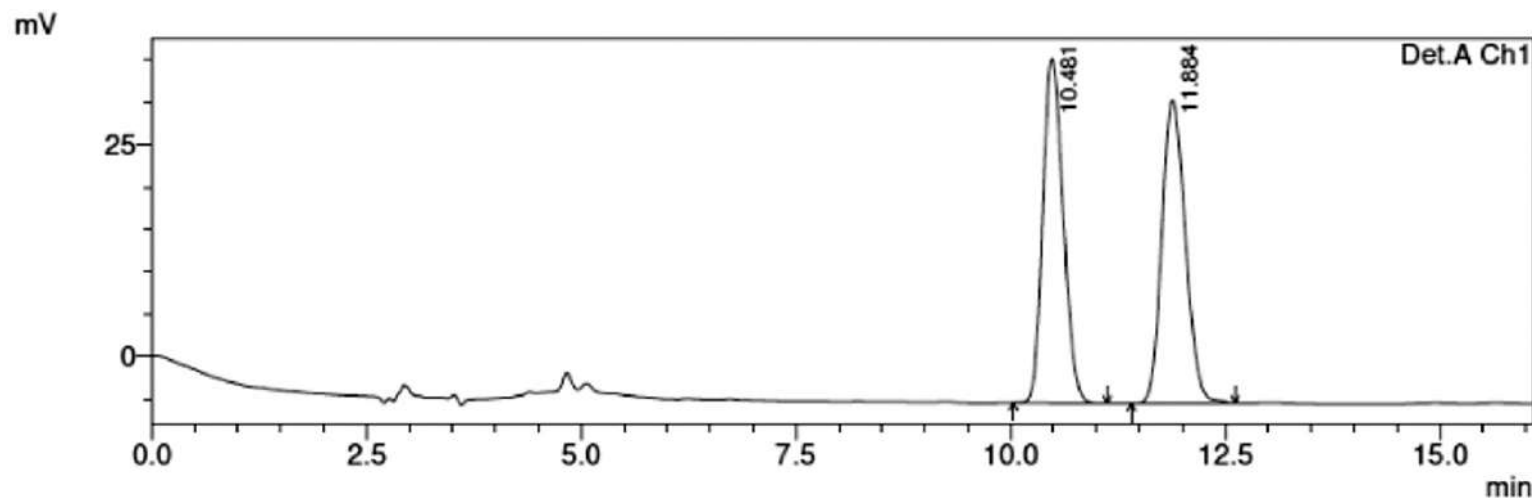
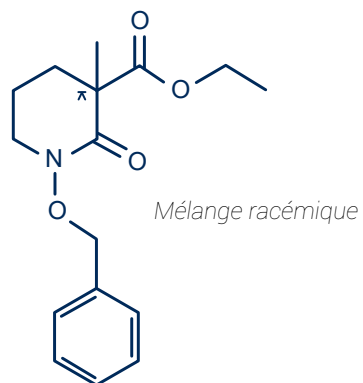
**Flow rate:** 1 mL/min

**Injection mode:** Liquid injection

**Injection volume:** 30µL

**Detection:** UV 254nm

**Elution conditions:** Isocratic mode



Peak#	Retention time	Area	Area %
1	10.481	672919	49.574
2	11.884	684481	50.426
Total	---	13587400	100.00

## 2. Flash conditions

Device: puriFlash® 4125-iELSD (or now puriFlash® 5.125 pack iELSD)

Solvents: A: Heptane  
B: THF

Column: CT-201A-F0004

Flow rate: 5mL/min

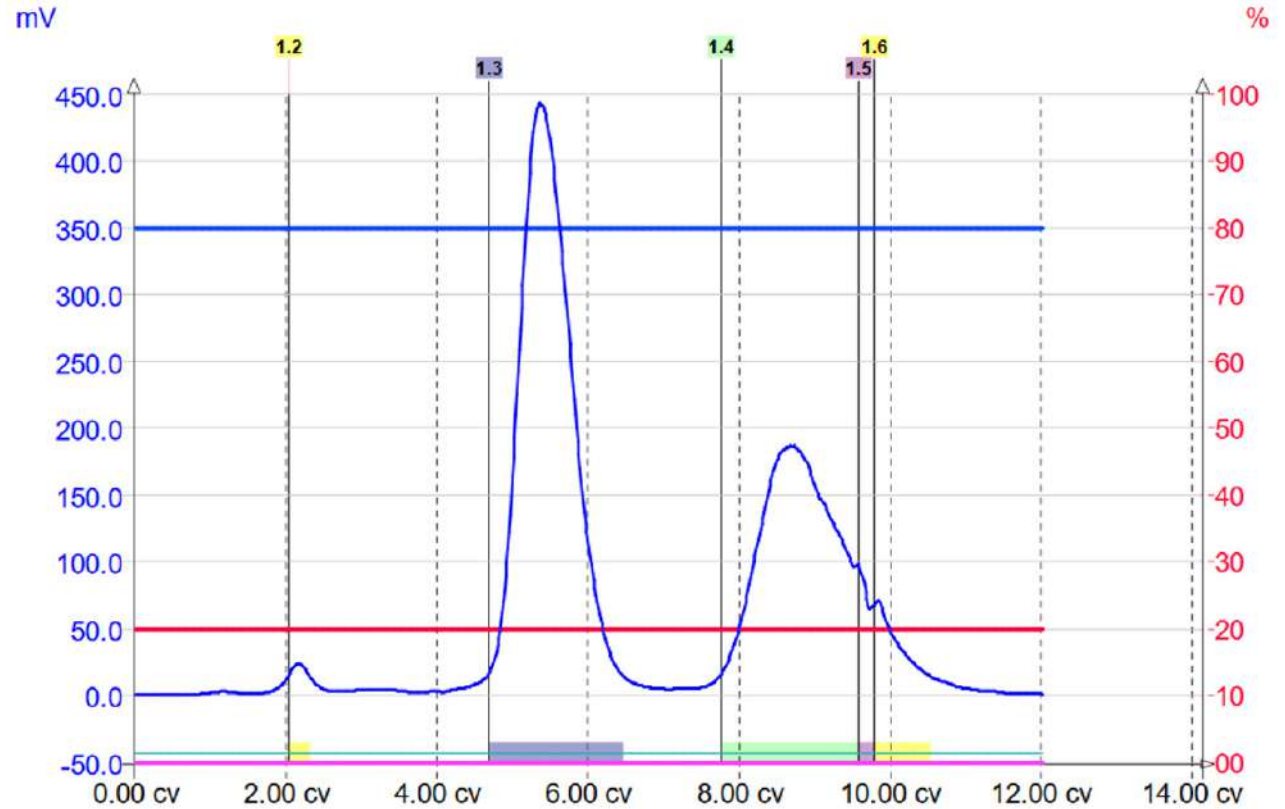
Injection mode: Liquid injection

Crude sample: 5mg (0.25mL cyclohexane)

Detection: ELSD (35°C; Automatic gain)

Elution conditions:

CV	A (%)	B (%)
0	80	20
12	80	20



### To achieve this purification:

#### You will need

- puriFlash® 5.125  
[Discover it](#) [Add to card](#)
- Integrated ELSD  
[Discover it](#) [Add to card](#)
- puriFlash® column CT-201A-F0004  
[Discover it](#) [Add to card](#)

#### We highly recommend

- Trolley  
AYHF20 [Add to card](#)
- Manometer ELSD  
FJ6720 [Add to card](#)
- 13x100mm Rack  
AYHE30 [Add to card](#)

